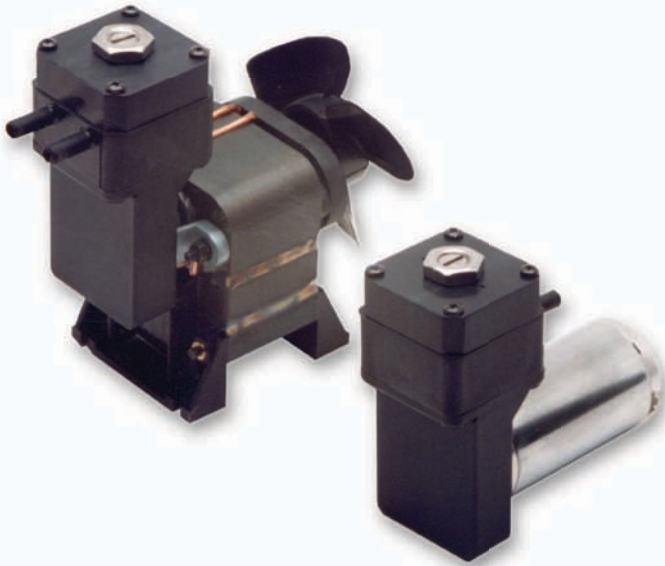




Oil-Free Liquid Diaphragm Pump

DL2



| |
|----------------------|
| Max Flow |
| 1.6 l/min |
| Max Lift (dry) |
| 5.0 m |
| Max Head |
| 20m H ₂ O |

Contamination free pumping

The DL2 is a self priming pump for use with either liquids, vapours, gases or associated mixtures. Suitable for continuous duty the DL2 is ideal for a wide range of industries, especially where systems can run dry.

Adaptability and long life

Suitable for OEM applications where reliability is essential. Featuring high quality components the DL2 includes sealed for life bearings and an innovative valve design. The performance can be customised to suit each client's individual requirements.

Easy pressure control

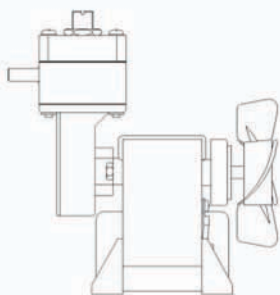
Incorporated within the head assembly of the DL2 is a fully adjustable by-pass valve. This allows the user full control over the output of the pump and acts as a useful safety feature, protecting both the pump and externally connected equipment from pressure damage.

Corrosion resistant options

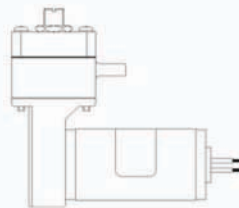
The DL2 can be upgraded with a range of optional material components providing resistance to a wide range of corrosive liquids or gases.

Application ideas

Application ideas include liquid dispensing, solar heating circulation, condensate removal and sample transfer

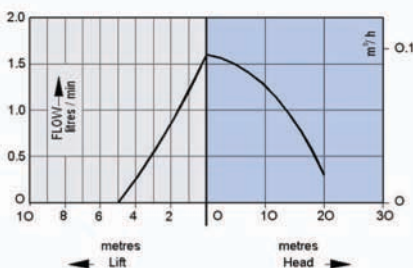


DL2 single ended pump
OEM model for AC
power supply

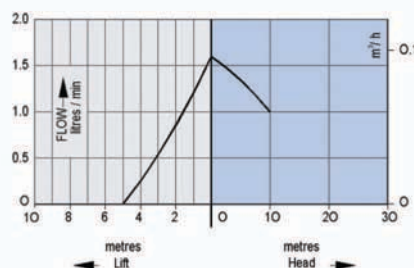


DL2 single ended pump
OEM model for DC
power supply

DL2 AC



DL2 DC



DL2

Motor Type:

AC Skeleton frame, shaded pole with shielded ball races throughout. 2800 RPM. Thermal Protection 125 C

DC Permanent magnet.

| model no. | 110/115V 50/60Hz (12V DC) | | | 230V 50Hz (24V DC) | | |
|----------------|---------------------------|-----------|-------------|--------------------|-----------|-------------|
| | operating current | max. load | fuse rating | operating current | max. load | fuse rating |
| DL2(AC Supply) | 0.8A | 0.9A | 2.0A | 0.45A | 0.5A | 1.0A |
| DL2(DC Supply) | 1.0A | 1.5A | 3.0A | 0.5A | 0.8A | 2.0A |

Performance:

| model no. | flow at zero head l/min | nominal max. head metres | max. lift (dry) metres |
|----------------|-------------------------|--------------------------|------------------------|
| DL2(AC Supply) | 1.6 | 20.0* | 5.0 |
| DL2(DC Supply) | 1.6 | 20.0* | 5.0 |

* recommended maximum working pressure

Pump Material Option:

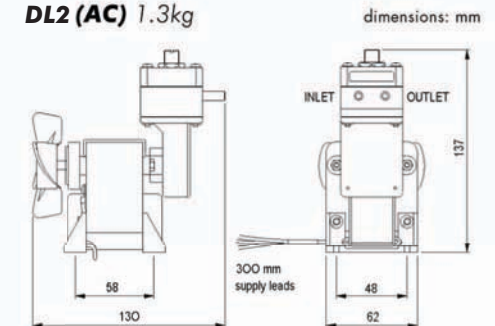
With the choice of Viton, PTFE and Chemraz flexibles, the pump will handle a variety of corrosive liquids and vapours.

| component | standard | options |
|-------------------------------|-----------------|---------------------|
| Head with integral connectors | Nylon | Polypropylene, PTFE |
| Diaphragm | EPDM | Viton, PTFE |
| Valves | Nitrile | Viton, Chemraz |
| Plates & Screws | Stainless Steel | n/a |
| Valve Pins & Valve Stops | Stainless Steel | n/a |
| Head Gasket | Viton | PTFE |

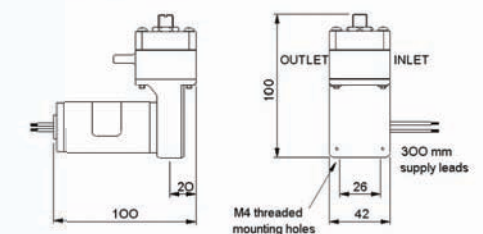
Connectors:

Integral, plain 6.0mm OD
Optional: Polypropylene 6mm OD

DL2 (AC) 1.3kg



DL2 (DC) 0.8kg



distributed by:

Please note that it is important that you ensure the motor specification stated and the range of materials offered in the pump are compatible with the performance, environmental limitations and chemical resistance of the application.

For further information or details of our extensive range of diaphragm pumps, contact our technical sales office who will be pleased to help you select the most suitable pump for your application. S30-224/1